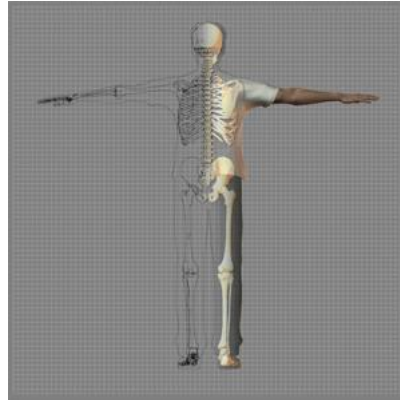


## *A Patient's Guide to* **Psoriatic Arthritis**



©MMG 2005



Accelerate your learning curve with educational materials that are clearly written and professionally illustrated. eOrthopod educational materials are peer-reviewed and constantly updated. Professional medical illustrations and animations make even the most complicated condition or procedure clear.

You want more control over your health. Education about your condition will empower you. Ask the right questions when you see your doctor or surgeon. Find the information you need on eOrthopod.com.

## Psoriatic Arthritis



©MMG 2000

### Introduction

*Psoriasis* is a disease that most people think of as primarily a skin disease because the condition causes a persistent rash in various areas of the body. *Psoriatic arthritis* is a type of joint disease that occurs in roughly seven percent of people who have psoriasis. Psoriatic arthritis affects people of all ages, but most get it between the ages of 30 and 50. Usually a patient has psoriasis (the skin rash) for many years before the arthritis develops, and the arthritis comes on slowly. But this is not always the case. No matter what, patients with psoriatic arthritis must manage both the outbreaks of itchy, scaly skin and the pain and stiffness of arthritis.

### This guide will help you understand

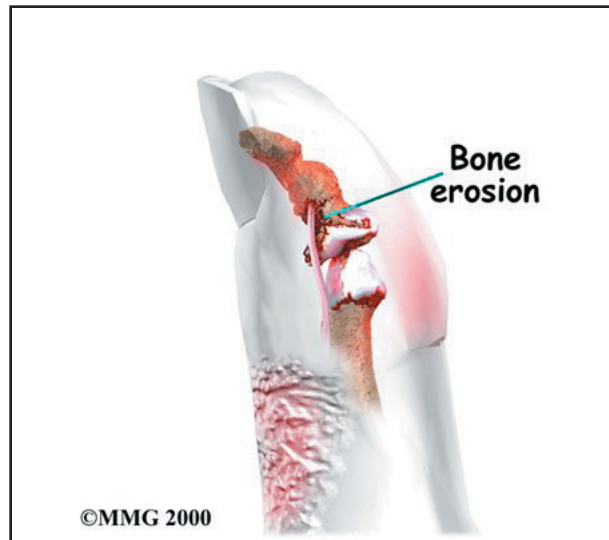
- **how psoriatic arthritis develops**
- **how doctors diagnose the condition**
- **what can be done for the problem**

### Anatomy

Where does psoriatic arthritis develop?

Psoriatic arthritis can affect any joint. Its symptoms often seem like the symptoms of *rheumatoid arthritis* (RA) or degenerative arthritis of the spine. X-rays can be used to

show the difference between psoriatic arthritis and other diseases. In psoriatic arthritis, X-rays show a very distinctive type of bone destruction around the joint and certain patterns of swelling in the tissues around the joints.



Patients with psoriatic arthritis fall into three groups. Many patients have what is called *asymmetric arthritis*. This means that only a few joints are involved and that it does not occur in the same joints on both sides of the body. (For example, only one wrist and one foot are affected.)

An equal number of patients suffer from *symmetric polyarthritis*. This means that arthritis occurs in several corresponding joints on both sides of the body. (For example, both elbows, both knees, and both hands are affected.) The polyarthritis type of psoriatic arthritis is much like RA.

A third group has mostly *axial* disease. This refers to arthritis of the spine, the *sacroiliac joint* (where the pelvis and bottom of the spine meet), or the hip and shoulder joints. Patients do not necessarily stay in the same category. Over time, the pattern may change. Doctors use these categories to better understand the disease and to follow the progression of the arthritis. The treatment is basically the same.

## Causes

Why do I have this problem?

The exact cause of psoriatic arthritis is not known. Many factors seem to be involved in its development. *Heredity*—your genes—plays a major role. People who are closely related to someone with psoriatic arthritis are 50 times more likely to develop the disease themselves. Recent studies have located genetic markers shared by most people who have the disease.

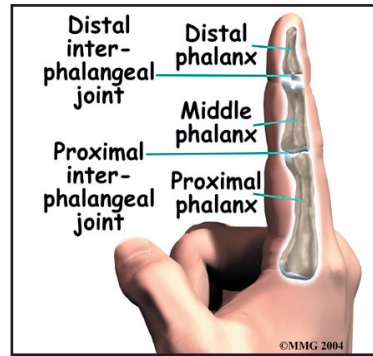
Sometimes injuries seem to set off psoriatic arthritis. Infections also contribute to the disease. It is known that strep infections in children can cause psoriasis. Some researchers think that the arthritis may be an immune system response to bacteria from the skin lesions.

## Symptoms

What does psoriatic arthritis feel like?

All people who suffer from psoriatic arthritis have psoriasis (the skin rash). Some patients have very few areas of rash. Other patients have psoriasis over a large portion of their bodies. The skin lesions of psoriasis are reddish, itchy, and have silvery scales. These areas can range in size from the size of a pencil dot to the large areas the size of your palm. Psoriasis usually shows up on the elbows, knees, scalp, ears, and abdomen, but it can appear anywhere. In people with psoriatic arthritis, the psoriasis most often affects fingernails or toenails. The nails may have pits or ridges, or they may be discolored or appear to be separating from the skin.

Psoriatic arthritis can affect any joint. Symptoms often seem like those of any other type of arthritis—joint swelling and pain—but patients generally describe less pain. Some joint symptoms are unique to psoriatic arthritis:



- The joints nearest to the fingernails and toenails are affected more. (These joints are called *distal interphalangeal*, or DIP, joints.)
- The affected fingers and toes take on a *sausage-like* appearance.
- The bones themselves become inflamed (called *dactylitis*).
- The tendons and ligaments become inflamed where they attach to bones. (This is called *enthesitis* and is especially common in the heels.)
- *Bony ankylosis* of the hands and feet develops. (This means that the joints stiffen and become frozen in awkward positions.)
- The joints grow inflamed where the bottom of the spine meets the pelvis. (This is called *sacroiliitis*.) Patients often notice no symptoms, but the inflammation can be seen on X-rays.
- The vertebrae of the spine become inflamed. (This is called *spondylitis*.)
- The eyes become inflamed.

About five percent of patients with psoriatic arthritis will develop a form of arthritis called *arthritis mutilans*. This type of arthritis affects the small joints of the hands and feet. It is especially severe and destructive. The destruction caused by arthritis mutilans can result in deformity of the hands and fingers.

Rare symptoms include problems with the aortic heart valve, extra tissue formation in the lungs, and metabolic disorders that affect the tissues.

## Diagnosis

How do doctors identify the condition?

A detailed medical history, with questions about psoriasis in your family, will help your doctor make a diagnosis. Patients with psoriasis may have other forms of arthritis, and the symptoms of psoriatic arthritis often look like other types of joint disease. This means that your doctor will probably do tests to rule out other diseases. Blood studies will help rule out RA. (The RA test is usually not positive in patients with psoriatic arthritis.) X-rays of affected joints will be studied both to rule out other diseases and to identify characteristics of psoriatic arthritis.

Psoriatic arthritis is common in people who test positive for HIV, the AIDS virus. As a precaution, your doctor may test your blood for HIV, especially if your symptoms are severe.

## Treatment

What can be done for the condition?

Dealing with psoriatic arthritis involves treating both the skin lesions and the joint pain. Many lotions and creams are made for skin affected by psoriasis. If the skin involvement is especially severe, your doctor will most likely prescribe a drug called *methotrexate*. Methotrexate can also help with the arthritis. *PUVA therapy* may be helpful for both the skin and joint problems. PUVA therapy uses topical cream medications that are rubbed on the skin lesions. Following application of the cream,

the skin area is placed under a lamp that emits a special ultraviolet light. The light triggers chemicals in the medication cream that treat the rash lesions.

Treatment of arthritis symptoms depends on which joints are affected and the severity of the disease. The first drugs most doctors prescribe are *nonsteroidal anti-inflammatory drugs* (NSAIDs). Aspirin and ibuprofen are NSAIDs, as are many prescription pain relievers. Other medications known as *disease-modifying antirheumatic drugs* (DMARDs) are used in patients with high levels of pain or especially bad arthritis. These medications work in different ways to control the arthritis.

Many other drugs can be used to treat psoriatic arthritis. Doctors will sometimes prescribe a combination of drugs. Cortisone injections into sore joints can help relieve pain. Surgery may be called for in the rare cases of unmanageable pain or loss of joint function.

Warm water soaks and applying heat to joints gives pain relief to many patients. Your doctor may ask you to see a physical therapist to maximize the strength and mobility of your joints. Stress does make your symptoms worse, so your doctor may encourage you to exercise and find ways to reduce the stress of your daily life.

Your psoriatic arthritis will not go away. But there are many treatment options. Together, you and your doctor should be able to find treatment that will work for you.

## Notes