

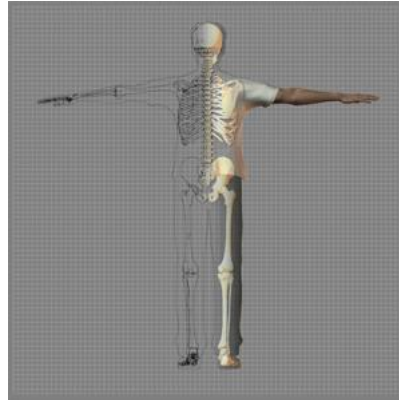
A Patient's Guide to **Radial Tunnel Syndrome**



©MMG 2003



eOrthopod.com



Accelerate your learning curve with educational materials that are clearly written and professionally illustrated. eOrthopod educational materials are peer-reviewed and constantly updated. Professional medical illustrations and animations make even the most complicated condition or procedure clear.

You want more control over your health. Education about your condition will empower you. Ask the right questions when you see your doctor or surgeon. Find the information you need on eOrthopod.com.



eOrthopod.com
228 West Main St., Suite D
Missoula, MT 59802-4345
Phone: 406-721-3072 Fax: 406-721-2619
info@eorthopod.com
<http://www.eorthopod.com/public>

Radial Tunnel Syndrome



©MMG 2002

Introduction

Radial tunnel syndrome happens when the **radial nerve** is squeezed where it passes through a tunnel near the elbow. The symptoms of radial tunnel syndrome are very similar to the symptoms of tennis elbow (*lateral epicondylitis*). There are very few helpful tests for radial tunnel syndrome, which can make it hard to diagnose.

This guide will help you understand

- what parts of the elbow are affected
- the causes of radial tunnel syndrome
- ways to make the pain go away

Anatomy

What is the radial tunnel?

The **radial nerve** starts at the side of the neck, where the individual **nerve roots** leave the spine.



©MMG 2001

The nerve roots exit through small openings between the vertebrae. These openings are called *neural foramina*.

The nerve roots join together to form three main nerves that travel down the arm to the hand. One of these nerves is the **radial nerve**. The nerve passes down the back of the upper arm. It then spirals outward and crosses the outside (the *lateral* part) of the elbow before it winds its way down the forearm and hand.

Path of radial nerve



©MMG 2001

On the lateral part of the elbow, the radial nerve enters a tunnel formed by muscles and bone. This is called the **radial tunnel**.

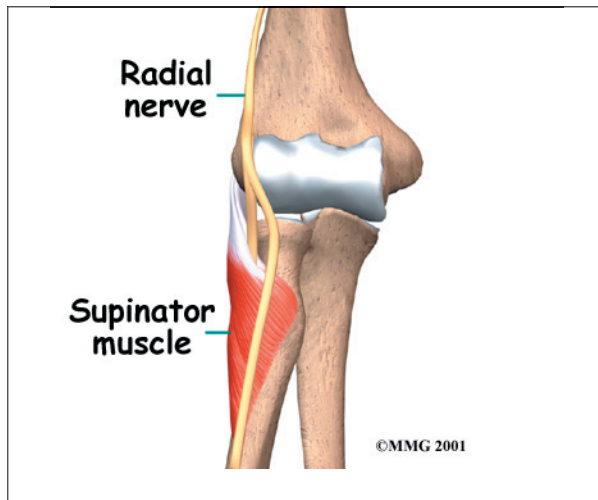
Passing through the radial tunnel, the radial nerve runs below the **supinator muscle**. The supinator muscle lets you twist your right hand clockwise. This is the motion of using a screwdriver to tighten a screw.

After the radial nerve passes under the supinator muscle, it branches out and attaches to the muscles on the back of the forearm.

Radial tunnel



©MMG 2001



Causes

What causes the pain of radial tunnel syndrome?

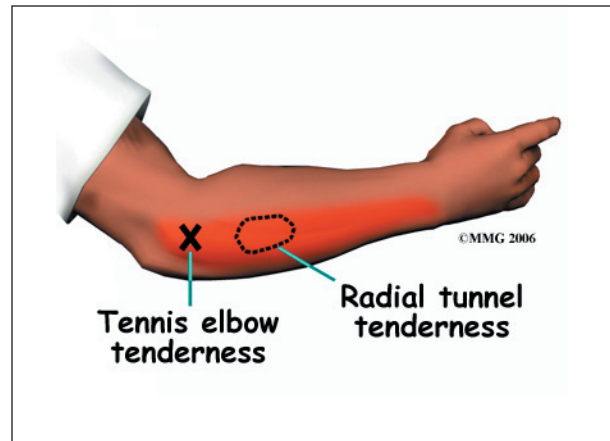
Pain is caused by pressure on the radial nerve. There are several spots along the radial tunnel that can pinch the nerve. If the tunnel is too small, it can squeeze the nerve and cause pain. Repetitive, forceful pushing and pulling, bending of the wrist, gripping, and pinching can also stretch and irritate the nerve.

Sometimes a direct blow to the outside of the elbow can injure the radial nerve. Constant twisting movements of the arm, common in assembly work, can also pinch the radial nerve and lead to radial tunnel syndrome.

Symptoms

What does radial tunnel syndrome feel like?

The symptoms of radial tunnel syndrome are tenderness and pain on the outside of the elbow. The symptoms of radial tunnel syndrome are very similar to the symptoms of tennis elbow. As in tennis elbow, pain from radial tunnel syndrome often starts near the *lateral epicondyle*. (The lateral epicondyle is a bony point on the outside of your elbow joint.) The pain gets worse when you bend your wrist backward, turn your palm upward, or hold something with a stiff wrist or straightened elbow.



One difference between radial tunnel syndrome and tennis elbow is the exact location of the pain. In tennis elbow, the pain starts where the tendon attaches to the lateral epicondyle. In radial tunnel syndrome, the pain is centered about two inches further down the arm, over the spot where the radial nerve goes under the supinator muscle. Radial tunnel syndrome may also cause a more achy type of pain or fatigue in the muscles of the forearm. Nerve pressure inside the radial tunnel leads to weakness in the muscles on the back of the forearm and wrist, making it difficult to steady the wrist when grasping and lifting. It can even lead to *wrist drop*, meaning the back of the hand can't be cocked up. Skin sensation is not changed because the sensory portion of the radial nerve branches off above the elbow and does not enter the radial tunnel.

Diagnosis

How will my doctor know I have radial tunnel syndrome?

The diagnosis of radial tunnel syndrome can be difficult. Many cases are initially diagnosed as tennis elbow. Tests don't always help tell the two conditions apart.

Your doctor will take a detailed medical history. You will be asked questions about your pain, your activities, and any past injuries to your elbow.

Your doctor will then do a physical examination to look for the most painful spot. The

prodding and movement may hurt. But it is important that your doctor know exactly where and when you have pain. Pinpointing the source of the pain will be most helpful in determining whether you have radial tunnel syndrome or tennis elbow.

You may do some tests of the radial nerve. An *electromyogram* (EMG) tests to see if the muscles of the forearm are working properly. If the test shows a problem with the muscles, it may be caused by a problem with the radial nerve. The *nerve conduction velocity* (NCV) test measures the speed of an electrical impulse as it travels along the radial nerve. If the speed is too slow, then the nerve is probably pinched.

These tests are not very accurate in diagnosing radial tunnel syndrome. Many people who have radial tunnel syndrome will have normal EMG and NCV test results. Your doctor will consider all parts of the examination in diagnosing whether or not you have a problem with radial tunnel syndrome.

Treatment

How can I make my pain go away?

Treating radial tunnel syndrome can be frustrating, for you and your doctor. Getting your symptoms under control and helping you regain the use of your elbow can be a challenge.

Nonsurgical Treatment

The most important part of your treatment is to avoid the activity that caused the problem in the first place. You need to avoid repetitive activities that require your wrist to be repeatedly bent backwards. Repeated use of the wrist in twisting motions (such as using a screwdriver) also make the problem worse. If your work tasks caused your condition, you need to modify your work site or your duties. This is crucial for treatment to be successful. You need to take frequent breaks as you work and play. You also need to limit heavy pushing, pulling, and grasping.

If symptoms are worse at night, you may want to wear a lightweight plastic arm splint while you sleep. This limits your elbow movements at night and eases further irritation. This may let the elbow rest, giving the nerve time to recover from irritation and pressure.

Doctors commonly have their patients with radial tunnel syndrome work with a physical or occupational therapist. At first, your therapist will give you tips on how to rest your elbow and how to do your activities without putting extra strain on your elbow. Your therapist may apply ice and electrical stimulation to ease pain. Exercises are used to gradually stretch and strengthen the forearm and muscles.

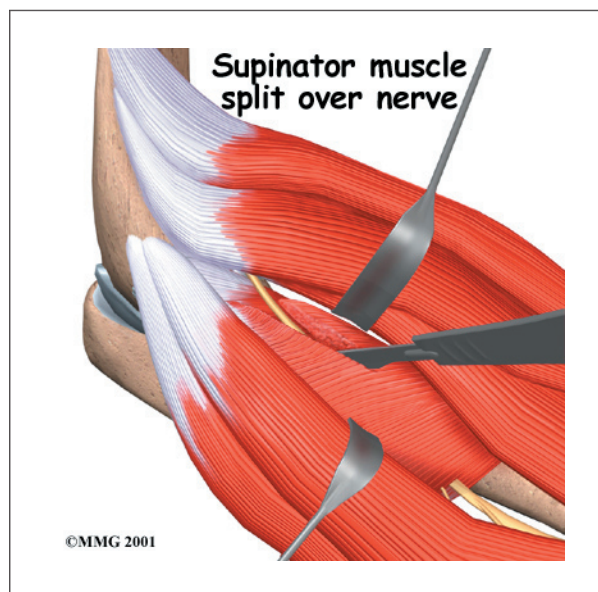
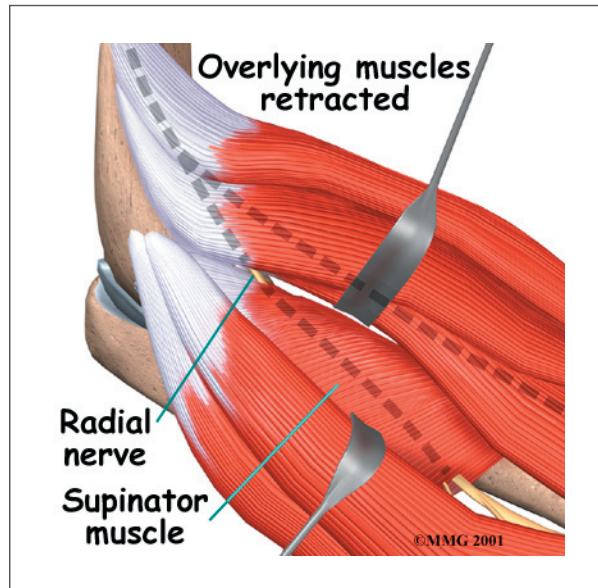
Surgery

Sometimes symptoms of radial tunnel syndrome aren't relieved, even after many months of nonsurgical treatment. In these cases, surgery may be the best treatment option. It is generally considered a last resort.

The goal of surgery for radial tunnel syndrome is to relieve any abnormal pressure on the nerve where it passes through the radial tunnel. The surgeon begins by making an incision along the outside of the elbow and down the forearm, near the spot where the radial nerve goes under the supinator muscle.



Soft tissues are gently moved aside so the surgeon can check the places where the radial nerve may be getting squeezed within the



radial tunnel. The nerve can be pinched in many spots, so it is important to check all the areas that may be causing problems. Any parts of the tunnel that are pinching the nerve are cut. This expands the tunnel and relieves pressure on the nerve. At the end of the procedure, the skin is stitched together.

Radial tunnel surgery can usually be done as an outpatient procedure. This means you won't

have to stay in the hospital overnight. Surgery can be done using a *general anesthetic*, which puts you to sleep, or a *regional anesthetic*. A regional anesthetic blocks nerves in only one part of your body. In this case, you would have an *axillary block*, which would affect only the nerves of the arm.

Rehabilitation

What can I expect after treatment?

Nonsurgical Rehabilitation

If nonsurgical treatments are successful, you may see improvement in four to six weeks. Your physical or occupational therapist work with you to ease symptoms and improve elbow function. Special exercises may be used to help the radial nerve glide within the radial tunnel. Treatment progresses to include strengthening exercises that mimic daily and work activities.

You may need to continue wearing your wrist strap during the day and the elbow pad or splint at night to control symptoms. Try to do your activities using healthy body and wrist alignment. Limit activities that require repeated hand and forearm motions, heavy grasping, and twisting motions of the arm and hand.

After Surgery

If you have surgery for radial tunnel syndrome, your elbow will be placed in a removable splint and wrapped in a bulky dressing following surgery. You will probably need to attend occupational or physical therapy sessions for six to eight weeks, and you should expect full recovery to take three to four months.

You'll begin doing active forearm range-of-motion exercises one week after surgery. Therapists also use ice packs, soft-tissue massage, and hands-on stretching to improve range of motion.

When the stitches are removed, you may start carefully strengthening your hand and forearm by squeezing and stretching special

putty. Therapists also use isometric exercises to improve forearm and hand strength without straining the tissues near the radial tunnel.

As you progress, your therapist will give you exercises to help strengthen and stabilize the muscles and joints in the wrist, elbow, and shoulder. Other exercises are used to improve fine motor control and dexterity of the hand.

Some of the exercises you'll do are designed get your elbow working in ways that are similar to your work tasks and sport activities. Your therapist will help you find ways to do your tasks that don't put too much stress on your elbow. Before your therapy sessions end, your therapist will teach you a number of ways to avoid future problems.

Notes